

**Properties**

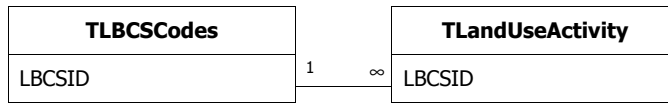
DateCreated:	9/8/2002 3:39:53 PM	DefaultView:	Datasheet
Description:	Assing LBCS Activity Codes here	GUID:	{guid {E9E780AB-DC55-4A2D-A7A1-F4FD870FDDC1}}
LastUpdated:	9/12/2002 9:49:11 AM	NameMap:	Long binary data
OrderByOn:	False	Orientation:	Left-to-Right
RecordCount:	51488	Updatable:	True

**Columns**

Name	Type	Size
ActivityID	Long Integer	4
ParcelID	Long Integer	4
LBCSID	Long Integer	4
ActivityComments	Memo	-

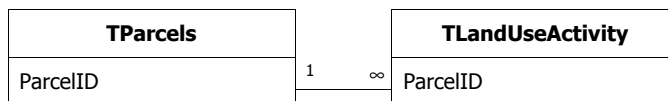
**Relationships**

**TLBCSCodesTLandUseActivity**



Attributes: Enforced, Cascade Updates, Cascade Deletes  
RelationshipType: One-To-Many

**TParcelsTLandUseActivity**



Attributes: Enforced, Cascade Updates, Cascade Deletes  
RelationshipType: One-To-Many

**Properties**

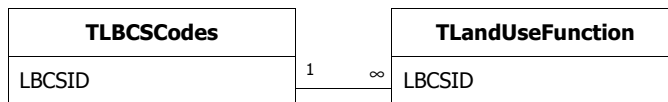
DateCreated:	9/8/2002 3:45:31 PM	DefaultView:	Datasheet
Description:	Assign LBCS Function Codes here	GUID:	{guid {7973E0F7-DBDE-4BD0-9FA9-93E2A4E5D2F8}}
LastUpdated:	9/12/2002 3:57:56 PM	NameMap:	Long binary data
OrderByOn:	False	Orientation:	Left-to-Right
RecordCount:	51488	Updatable:	True

**Columns**

Name	Type	Size
FunctionID	Long Integer	4
ParcelID	Long Integer	4
LBCSID	Long Integer	4
FunctionComments	Memo	-

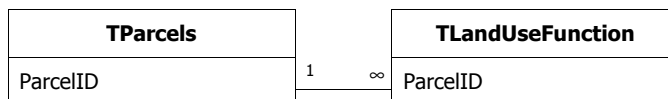
**Relationships**

**TLBCSCodesTLandUseFunction**



Attributes: Enforced, Cascade Updates, Cascade Deletes  
 RelationshipType: One-To-Many

**TParcelsTLandUseFunction**



Attributes: Enforced, Cascade Updates, Cascade Deletes  
 RelationshipType: One-To-Many

**Properties**

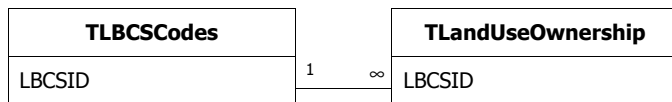
DateCreated:	9/8/2002 3:52:12 PM	DefaultView:	Datasheet
Description:	Assign LBCS Ownership Codes here	GUID:	{guid {347D309B-4169-42F6-B3CB-C674B8C8038C}}
LastUpdated:	9/12/2002 9:48:42 AM	NameMap:	Long binary data
OrderByOn:	False	Orientation:	Left-to-Right
RecordCount:	51489	Updatable:	True

**Columns**

Name	Type	Size
OwnershipID	Long Integer	4
ParcelID	Long Integer	4
LBCSID	Long Integer	4
OwnershipComments	Memo	-

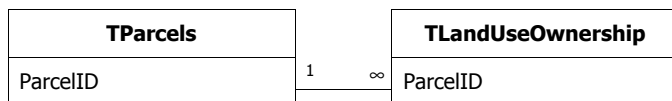
**Relationships**

**TLBCSCodesTLandUseOwnership**



Attributes: Enforced, Cascade Updates, Cascade Deletes  
RelationshipType: One-To-Many

**TParcelsTLandUseOwnership**



Attributes: Enforced, Cascade Updates, Cascade Deletes  
RelationshipType: One-To-Many

**Properties**

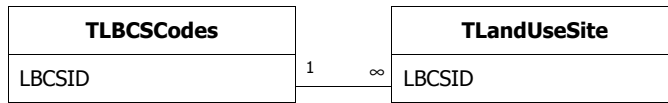
DateCreated:	9/8/2002 3:50:02 PM	DefaultView:	Datasheet
Description:	Assign LBCS Site Development Character Codes here	GUID:	{guid {D81C0F3C-78B7-4435-B83C-BB0071623C69}}
LastUpdated:	9/12/2002 9:44:14 AM	NameMap:	Long binary data
OrderByOn:	False	Orientation:	Left-to-Right
RecordCount:	51488	Updatable:	True

**Columns**

Name	Type	Size
SiteID	Long Integer	4
ParcelID	Long Integer	4
LBCSID	Long Integer	4
SiteComments	Memo	-

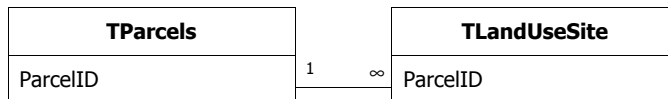
**Relationships**

**TLBCSCodesTLandUseSite**



Attributes: Enforced, Cascade Updates, Cascade Deletes  
RelationshipType: One-To-Many

**TParcelsTLandUseSite**



Attributes: Enforced, Cascade Updates, Cascade Deletes  
RelationshipType: One-To-Many

**Properties**

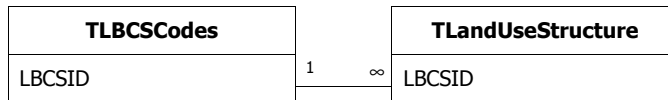
DateCreated:	9/8/2002 3:49:19 PM	DefaultView:	Datasheet
Description:	Assign LBCS Structure Codes here	GUID:	{guid {D94730AA-1D6F-4BBD-B509-267452462A3B}}
LastUpdated:	9/12/2002 9:48:18 AM	NameMap:	Long binary data
OrderByOn:	False	Orientation:	Left-to-Right
RecordCount:	51488	Updatable:	True

**Columns**

Name	Type	Size
StructureID	Long Integer	4
ParcelID	Long Integer	4
LBCSID	Long Integer	4
StructureComments	Memo	-

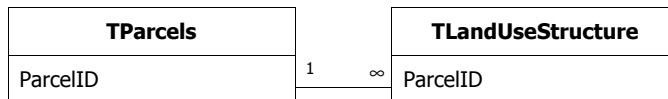
**Relationships**

**TLBCSCodesTLandUseStructure**



Attributes: Enforced, Cascade Updates, Cascade Deletes  
RelationshipType: One-To-Many

**TParcelsTLandUseStructure**



Attributes: Enforced, Cascade Updates, Cascade Deletes  
RelationshipType: One-To-Many

**Properties**

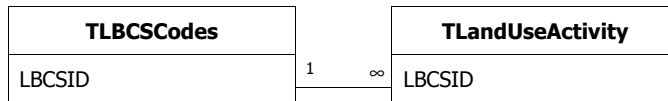
DateCreated: 9/10/2002 5:55:52 PM      DefaultView: Datasheet  
Description: LBCS Codes (replace this with the latest table from http://www.planning.org/LBCS when you are ready to code)      GUID: {guid {2711616A-4B5C-40F2-BB63-23201DCBDAD7}}  
LastUpdated: 9/10/2002 7:20:10 PM      NameMap: Long binary data  
OrderByOn: True      Orientation: Left-to-Right  
RecordCount: 974      Updatable: True

**Columns**

Name	Type	Size
LBCSID	Long Integer	4
LBCSDimension	Text	50
LBCSCode	Long Integer	4
LBCSDescription	Text	255
LBCSDefinition	Memo	-

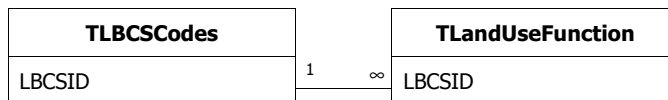
**Relationships**

**TLBCSCodesTLandUseActivity**



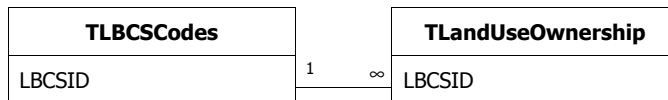
Attributes: Enforced, Cascade Updates, Cascade Deletes  
RelationshipType: One-To-Many

**TLBCSCodesTLandUseFunction**



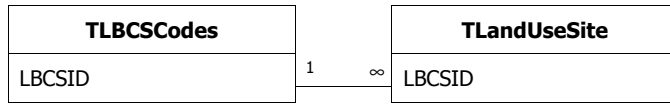
Attributes: Enforced, Cascade Updates, Cascade Deletes  
RelationshipType: One-To-Many

**TLBCSCodesTLandUseOwnership**



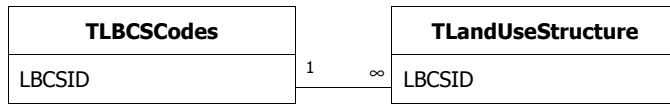
Attributes: Enforced, Cascade Updates, Cascade Deletes  
RelationshipType: One-To-Many

**TLBCSCodesTLandUseSite**



Attributes: Enforced, Cascade Updates, Cascade Deletes  
RelationshipType: One-To-Many

**TLBCSCodesTLandUseStructure**



Attributes: Enforced, Cascade Updates, Cascade Deletes  
RelationshipType: One-To-Many

**Properties**

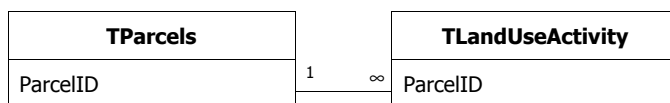
DateCreated:	9/10/2002 5:55:52 PM	DefaultView:	Datasheet
Description:	List of Parcels, a sample	GUID:	{guid {B23A3CD1-8A6C-4600-85E2-8F7E42A2CC7D}}
LastUpdated:	9/11/2002 11:14:34 AM	LinkChildFields:	ParcelID
LinkMasterFields:	ParcelID	NameMap:	Long binary data
OrderByOn:	False	Orientation:	Left-to-Right
RecordCount:	51488	SubdatasheetName:	Table.TLandUseActivity
Updatable:	True		

**Columns**

Name	Type	Size
ParcelID	Long Integer	4
ParcelArea	Double	8
ParcelPerimeter	Double	8
ParcelNum	Text	10
ParcelTaxDistrict	Integer	2
ParcelOwner	Text	50
ParcelAddrStreet	Text	25
ParcelLandValue	Double	8
ParcelImpValue	Double	8
ParcelAssdArea	Double	8
ParcelAssdSQFT	Double	8
OldLandUse	Integer	2
OldLandUseCategory	Text	35
OldLandUseDescription	Text	40
OtherFieldsFollow	Byte	1

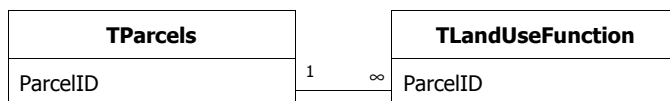
**Relationships**

**TParcelsTLandUseActivity**



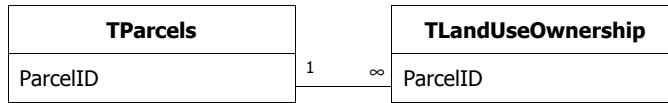
Attributes: Enforced, Cascade Updates, Cascade Deletes  
 RelationshipType: One-To-Many

**TParcelsTLandUseFunction**



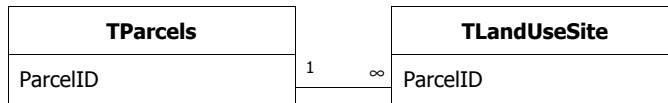
Attributes: Enforced, Cascade Updates, Cascade Deletes  
 RelationshipType: One-To-Many

**TParcelsTLandUseOwnership**



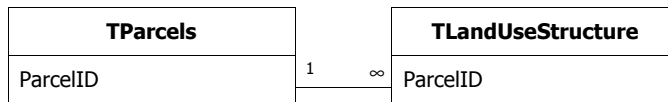
Attributes: Enforced, Cascade Updates, Cascade Deletes  
RelationshipType: One-To-Many

**TParcelsTLandUseSite**



Attributes: Enforced, Cascade Updates, Cascade Deletes  
RelationshipType: One-To-Many

**TParcelsTLandUseStructure**



Attributes: Enforced, Cascade Updates, Cascade Deletes  
RelationshipType: One-To-Many

**Properties**

DateCreated:	9/10/2002 5:56:00 PM	DefaultView:	Datasheet
Description:	LBCS Codes (replace this with the latest table from <a href="http://www.planning.org/LBCS">http://www.planning.org/LBCS</a> when you are ready to code)	DOL:	Long binary data
GUID:	{guid {356A855C-10AB-4B5D-BDDF-9DB0BD519B19}}	LastUpdated:	9/12/2002 11:13:35 AM
MaxRecords:	0	NameMap:	Long binary data
ODBCTimeout:	60	OrderByOn:	False
Orientation:	Left-to-Right	RecordLocks:	No Locks
RecordsAffected:	0	RecordsetType:	Dynaset
ReturnsRecords:	True	Type:	0
Updatable:	True		

**SQL**

```

SELECT TLBCSCodes.LBCSID, TLBCSCodes.LBCSDimension, TLBCSCodes.LBCSCode,
TLBCSCodes.LBCSDescription, TLBCSCodes.LBCSDefinition,
IIf((Int([LBCSCode]/1000)*1000)=[LBCSCode],[LBCSCode],[LBCSCode],[LBCSCode],[LBCSCode],[LBCSCode]) AS LBCSLevel1,
IIf((Int([LBCSCode]/100)*100)=[LBCSCode],[LBCSCode],[LBCSCode],[LBCSCode],[LBCSCode],[LBCSCode]) AS LBCSLevel2,
IIf((Int([LBCSCode]/10)*10)=[LBCSCode],[LBCSCode],[LBCSCode],[LBCSCode],[LBCSCode],[LBCSCode]) AS LBCSLevel3
FROM TLBCSCodes
ORDER BY TLBCSCodes.LBCSDimension, TLBCSCodes.LBCSCode;
    
```

**Columns**

Name	Type	Size
LBCSID	Long Integer	4
LBCSDimension	Text	50
LBCSCode	Long Integer	4
LBCSDescription	Text	255
LBCSDefinition	Memo	N/A
LBCSLevel1	Double	8
LBCSLevel2	Double	8
LBCSLevel3	Double	8

**Properties**

DateCreated:	9/10/2002 5:56:00 PM	DefaultView:	Datasheet
Description:	LBCS Codes (replace this with the latest table from <a href="http://www.planning.org/LBCS">http://www.planning.org/LBCS</a> when you are ready to code)	DOL:	Long binary data
GUID:	{guid {A728E1F5-875D-457A-B18F-FD9D987AE889}}	LastUpdated:	9/12/2002 11:17:29 AM
MaxRecords:	0	NameMap:	Long binary data
ODBCTimeout:	60	OrderByOn:	False
Orientation:	Left-to-Right	RecordLocks:	No Locks
RecordsAffected:	0	RecordsetType:	Dynaset
ReturnsRecords:	True	RowHeight:	888
Type:	0	Updatable:	True

**SQL**

```
SELECT QLBCSAllCodes.LBCSID, QLBCSAllCodes.LBCSCode AS ActivityCode, QLBCSAllCodes.LBCSDescription AS ActivityDescription, QLBCSAllCodes.LBCSDefinition AS ActivityDefinition, QLBCSAllCodes.LBCSLevel1 AS ActivityCodeLevel1, QLBCSAllCodes.LBCSLevel2 AS ActivityCodeLevel2, QLBCSAllCodes.LBCSLevel3 AS ActivityCodeLevel3
FROM QLBCSAllCodes
WHERE (((QLBCSAllCodes.LBCSDimension)="Activity"));
```

**Columns**

Name	Type	Size
LBCSID	Long Integer	4
ActivityCode	Long Integer	4
ActivityDescription	Text	255
ActivityDefinition	Memo	N/A
ActivityCodeLevel1	Double	8
ActivityCodeLevel2	Double	8
ActivityCodeLevel3	Double	8

**Properties**

DateCreated:	9/10/2002 5:56:00 PM	DefaultView:	Datasheet
Description:	LBCS Codes (replace this with the latest table from <a href="http://www.planning.org/LBCS">http://www.planning.org/LBCS</a> when you are ready to code)	DOL:	Long binary data
GUID:	{guid {5D29ACA9-C132-402E-A38D-F939025DF0B9}}	LastUpdated:	9/12/2002 1:09:52 PM
MaxRecords:	0	NameMap:	Long binary data
ODBCTimeout:	60	OrderByOn:	True
Orientation:	Left-to-Right	RecordLocks:	No Locks
RecordsAffected:	0	RecordsetType:	Dynaset
ReturnsRecords:	True	RowHeight:	1464
Type:	0	Updatable:	True

**SQL**

```
SELECT QLBCSAllCodes.LBCSID, QLBCSAllCodes.LBCSCode AS FunctionCode, QLBCSAllCodes.LBCSDescription AS FunctionDescription, QLBCSAllCodes.LBCSDefinition AS FunctionDefinition, QLBCSAllCodes.LBCSLevel1 AS FunctionCodeLevel1, QLBCSAllCodes.LBCSLevel2 AS FunctionCodeLevel2, QLBCSAllCodes.LBCSLevel3 AS FunctionCodeLevel3  
FROM QLBCSAllCodes  
WHERE (((QLBCSAllCodes.LBCSDimension)="Function"));
```

**Columns**

Name	Type	Size
LBCSID	Long Integer	4
FunctionCode	Long Integer	4
FunctionDescription	Text	255
FunctionDefinition	Memo	N/A
FunctionCodeLevel1	Double	8
FunctionCodeLevel2	Double	8
FunctionCodeLevel3	Double	8

**Properties**

DateCreated:	9/10/2002 5:56:00 PM	DefaultView:	Datasheet
Description:	LBCS Codes (replace this with the latest table from <a href="http://www.planning.org/LBCS">http://www.planning.org/LBCS</a> when you are ready to code)	DOL:	Long binary data
GUID:	{guid {AB292365-151E-4741-A623-DA3176237B2C}}	LastUpdated:	9/12/2002 1:11:10 PM
MaxRecords:	0	NameMap:	Long binary data
ODBCTimeout:	60	OrderByOn:	False
Orientation:	Left-to-Right	RecordLocks:	No Locks
RecordsAffected:	0	RecordsetType:	Dynaset
ReturnsRecords:	True	Type:	0
Updatable:	True		

**SQL**

```
SELECT QLBCSAllCodes.LBCSID, QLBCSAllCodes.LBCSCode AS OwnershipCode,
QLBCSAllCodes.LBCSDescription AS OwnershipDescription, QLBCSAllCodes.LBCSDefinition AS
OwnershipDefinition, QLBCSAllCodes.LBCSLevel1 AS OwnershipCodeLevel1, QLBCSAllCodes.LBCSLevel2 AS
OwnershipCodeLevel2, QLBCSAllCodes.LBCSLevel3 AS OwnershipCodeLevel3
FROM QLBCSAllCodes
WHERE (((QLBCSAllCodes.LBCSDimension)="Ownership"));
```

**Columns**

Name	Type	Size
LBCSID	Long Integer	4
OwnershipCode	Long Integer	4
OwnershipDescription	Text	255
OwnershipDefinition	Memo	N/A
OwnershipCodeLevel1	Double	8
OwnershipCodeLevel2	Double	8
OwnershipCodeLevel3	Double	8

**Properties**

DateCreated: 9/10/2002 5:56:00 PM DefaultView: Datasheet  
Description: LBCS Codes (replace this with DOL: Long binary data  
the latest table from  
http://www.planning.org/LBCS  
when you are ready to code)  
GUID: {guid {E2D224C3-D8AD-4AB6- LastUpdated: 9/12/2002 1:11:41 PM  
ABAD-4BEF2FAC6F90}}  
MaxRecords: 0 NameMap: Long binary data  
ODBCTimeout: 60 OrderByOn: False  
Orientation: Left-to-Right RecordLocks: No Locks  
RecordsAffected: 0 RecordsetType: Dynaset  
ReturnsRecords: True Type: 0  
Updatable: True

**SQL**

```
SELECT QLBCSAllCodes.LBCSID, QLBCSAllCodes.LBCSCode AS SiteCode, QLBCSAllCodes.LBCSDescription AS  
SiteDescription, QLBCSAllCodes.LBCSDefinition AS SiteDefinition, QLBCSAllCodes.LBCSLevel1 AS  
SiteCodeLevel1, QLBCSAllCodes.LBCSLevel2 AS SiteCodeLevel2, QLBCSAllCodes.LBCSLevel3 AS SiteCodeLevel3  
FROM QLBCSAllCodes  
WHERE (((QLBCSAllCodes.LBCSDimension)="Site"));
```

**Columns**

Name	Type	Size
LBCSID	Long Integer	4
SiteCode	Long Integer	4
SiteDescription	Text	255
SiteDefinition	Memo	N/A
SiteCodeLevel1	Double	8
SiteCodeLevel2	Double	8
SiteCodeLevel3	Double	8

**Properties**

DateCreated:	9/10/2002 5:56:00 PM	DefaultView:	Datasheet
Description:	LBCS Codes (replace this with the latest table from <a href="http://www.planning.org/LBCS">http://www.planning.org/LBCS</a> when you are ready to code)	DOL:	Long binary data
GUID:	{guid {54F18772-5B2F-4D3B-8944-67D1A52D58A9}}	LastUpdated:	9/12/2002 1:12:17 PM
MaxRecords:	0	NameMap:	Long binary data
ODBCTimeout:	60	OrderByOn:	False
Orientation:	Left-to-Right	RecordLocks:	No Locks
RecordsAffected:	0	RecordsetType:	Dynaset
ReturnsRecords:	True	RowHeight:	1260
Type:	0	Updatable:	True

**SQL**

```
SELECT QLBCSAllCodes.LBCSID, QLBCSAllCodes.LBCSCode AS StructureCode, QLBCSAllCodes.LBCSDescription AS StructureDescription, QLBCSAllCodes.LBCSDefinition AS StructureDefinition, QLBCSAllCodes.LBCSLevel1 AS StructureCodeLevel1, QLBCSAllCodes.LBCSLevel2 AS StructureCodeLevel2, QLBCSAllCodes.LBCSLevel3 AS StructureCodeLevel3  
FROM QLBCSAllCodes  
WHERE (((QLBCSAllCodes.LBCSDimension)="Structure"));
```

**Columns**

Name	Type	Size
LBCSID	Long Integer	4
StructureCode	Long Integer	4
StructureDescription	Text	255
StructureDefinition	Memo	N/A
StructureCodeLevel1	Double	8
StructureCodeLevel2	Double	8
StructureCodeLevel3	Double	8

**Properties**

DateCreated:	9/10/2002 5:56:00 PM	DefaultView:	Datasheet
Description:	LBCS Codes (replace this with the latest table from <a href="http://www.planning.org/LBCS">http://www.planning.org/LBCS</a> when you are ready to code)	DOL:	Long binary data
GUID:	{guid {59E73834-D905-4CE7-B1C3-C87AFF5DF965}}	LastUpdated:	9/12/2002 11:33:48 AM
MaxRecords:	0	NameMap:	Long binary data
ODBCTimeout:	60	OrderByOn:	False
Orientation:	Left-to-Right	RecordLocks:	No Locks
RecordsAffected:	0	RecordsetType:	Dynaset
ReturnsRecords:	True	Type:	0
Updatable:	True		

**SQL**

```
PARAMETERS [Enter text] Text ( 255 );
SELECT TLBCSCodes.LBCSID, TLBCSCodes.LBCSDimension, TLBCSCodes.LBCSCCode,
TLBCSCodes.LBCSDescription, TLBCSCodes.LBCSDefinition, IIf([LBCSCCode]-
(Int([LBCSCCode]/1000)*1000)=0,1,IIf([LBCSCCode]-(Int([LBCSCCode]/100)*100)=0,2,IIf([LBCSCCode]-
(Int([LBCSCCode]/10)*10)=0,3,4))) AS FunctionLevel
FROM TLBCSCodes
WHERE (((TLBCSCodes.LBCSDescription) Like "*" & [Enter text] & "*")) OR (((TLBCSCodes.LBCSDefinition)
Like "*" & [Enter text] & "*"))
ORDER BY TLBCSCodes.LBCSDimension, TLBCSCodes.LBCSCCode;
```

**Query Parameters**

Name	Type
[Enter text]	Text

**Columns**

Name	Type	Size
LBCSID	Long Integer	4
LBCSDimension	Text	50
LBCSCCode	Long Integer	4
LBCSDescription	Text	255
LBCSDefinition	Memo	N/A
FunctionLevel	Long Integer	4

**Properties**

DateCreated:	9/12/2002 10:02:52 AM	DefaultView:	Datasheet
DOL:	Long binary data	GUID:	{guid {856F5215-001A-40FC-9ECF-58E1B7AA92CF}}
LastUpdated:	9/12/2002 11:50:56 AM	MaxRecords:	0
ODBCTimeout:	60	OrderByOn:	False
Orientation:	Left-to-Right	RecordLocks:	No Locks
RecordsAffected:	0	RecordsetType:	Dynaset
ReturnsRecords:	True	Type:	0
Updatable:	True		

**SQL**

```
SELECT QLBCSAllCodesActivity.ActivityCodeLevel1, QLBCSAllCodesActivity_1.ActivityDescription,
Sum(TParcels.ParcelAssdArea) AS TotalAcreage, Sum(TParcels.ParcelAssdSQFT) AS TotalSQFT
FROM (TParcels INNER JOIN (TLandUseActivity INNER JOIN QLBCSAllCodesActivity ON
TLandUseActivity.LBCSID = QLBCSAllCodesActivity.LBCSID) ON TParcels.ParcelID =
TLandUseActivity.ParcelID) INNER JOIN QLBCSAllCodesActivity AS QLBCSAllCodesActivity_1 ON
QLBCSAllCodesActivity.ActivityCodeLevel1 = QLBCSAllCodesActivity_1.ActivityCode
GROUP BY QLBCSAllCodesActivity.ActivityCodeLevel1, QLBCSAllCodesActivity_1.ActivityDescription;
```

**Columns**

Name	Type	Size
ActivityCodeLevel1	Double	8
ActivityDescription	Text	255
TotalAcreage	Double	8
TotalSQFT	Double	8

**Properties**

DateCreated:	9/12/2002 10:16:01 AM	DefaultView:	Datasheet
DOL:	Long binary data	GUID:	{guid {DFFF36AE-A0E0-4E90-A444-F6E8C137F033}}
LastUpdated:	9/12/2002 1:13:17 PM	MaxRecords:	0
ODBCTimeout:	60	OrderByOn:	False
Orientation:	Left-to-Right	RecordLocks:	No Locks
RecordsAffected:	0	RecordsetType:	Dynaset
ReturnsRecords:	True	Type:	0
Updatable:	True		

**SQL**

```
SELECT QLBCSAllCodesFunction.FunctionCodeLevel1, QLBCSAllCodesFunction_1.FunctionDescription,
Sum(TParcels.ParcelAssdArea) AS TotalAcreage, Sum(TParcels.ParcelAssdSQFT) AS TotalSQFT
FROM TParcels INNER JOIN ((TLandUseFunction INNER JOIN QLBCSAllCodesFunction ON
TLandUseFunction.LBCSID=QLBCSAllCodesFunction.LBCSID) INNER JOIN QLBCSAllCodesFunction AS
QLBCSAllCodesFunction_1 ON
QLBCSAllCodesFunction.FunctionCodeLevel1=QLBCSAllCodesFunction_1.FunctionCode) ON
TParcels.ParcelID=TLandUseFunction.ParcelID
GROUP BY QLBCSAllCodesFunction.FunctionCodeLevel1, QLBCSAllCodesFunction_1.FunctionDescription;
```

**Columns**

Name	Type	Size
FunctionCodeLevel1	Double	8
FunctionDescription	Text	255
TotalAcreage	Double	8
TotalSQFT	Double	8

**Properties**

DateCreated:	9/12/2002 10:21:01 AM	DefaultView:	Datasheet
DOL:	Long binary data	GUID:	{guid {81B13630-71C7-450C-9B5D-32AC2426A4BB}}
LastUpdated:	9/12/2002 1:14:07 PM	MaxRecords:	0
ODBCTimeout:	60	OrderByOn:	False
Orientation:	Left-to-Right	RecordLocks:	No Locks
RecordsAffected:	0	RecordsetType:	Dynaset
ReturnsRecords:	True	Type:	0
Updatable:	True		

**SQL**

```
SELECT QLBCSAllCodesSite.SiteCodeLevel1, QLBCSAllCodesSite_1.SiteDescription,  
Sum(TParcels.ParcelAssdArea) AS TotalAcreage, Sum(TParcels.ParcelAssdSQFT) AS TotalSQFT  
FROM TParcels INNER JOIN ((TLandUseSite INNER JOIN QLBCSAllCodesSite ON  
TLandUseSite.LBCSID=QLBCSAllCodesSite.LBCSID) INNER JOIN QLBCSAllCodesSite AS QLBCSAllCodesSite_1  
ON QLBCSAllCodesSite.SiteCodeLevel1=QLBCSAllCodesSite_1.SiteCode) ON  
TParcels.ParcelID=TLandUseSite.ParcelID  
GROUP BY QLBCSAllCodesSite.SiteCodeLevel1, QLBCSAllCodesSite_1.SiteDescription;
```

**Columns**

Name	Type	Size
SiteCodeLevel1	Double	8
SiteDescription	Text	255
TotalAcreage	Double	8
TotalSQFT	Double	8

**Properties**

DateCreated:	9/12/2002 10:18:45 AM	DefaultView:	Datasheet
DOL:	Long binary data	GUID:	{guid {BD3A1C4B-51BB-4ED5-AC2D-DB161ED7C4AA}}
LastUpdated:	9/12/2002 1:14:52 PM	MaxRecords:	0
ODBCTimeout:	60	OrderByOn:	False
Orientation:	Left-to-Right	RecordLocks:	No Locks
RecordsAffected:	0	RecordsetType:	Dynaset
ReturnsRecords:	True	Type:	0
Updatable:	True		

**SQL**

```
SELECT QLBCSAllCodesStructure.StructureCodeLevel1, QLBCSAllCodesStructure_1.StructureDescription,
Sum(TParcels.ParcelAssdArea) AS TotalAcreage, Sum(TParcels.ParcelAssdSQFT) AS TotalSQFT
FROM TParcels INNER JOIN ((TLandUseStructure INNER JOIN QLBCSAllCodesStructure ON
TLandUseStructure.LBCSID=QLBCSAllCodesStructure.LBCSID) INNER JOIN QLBCSAllCodesStructure AS
QLBCSAllCodesStructure_1 ON
QLBCSAllCodesStructure.StructureCodeLevel1=QLBCSAllCodesStructure_1.StructureCode) ON
TParcels.ParcelID=TLandUseStructure.ParcelID
GROUP BY QLBCSAllCodesStructure.StructureCodeLevel1, QLBCSAllCodesStructure_1.StructureDescription;
```

**Columns**

Name	Type	Size
StructureCodeLevel1	Double	8
StructureDescription	Text	255
TotalAcreage	Double	8
TotalSQFT	Double	8

**Properties**

DateCreated:	9/12/2002 10:22:24 AM	DefaultView:	Datasheet
DOL:	Long binary data	GUID:	{guid {311123C0-4C01-4382-A364-ACED38C26FDE}}
LastUpdated:	9/12/2002 1:15:47 PM	MaxRecords:	0
ODBCTimeout:	60	OrderByOn:	False
Orientation:	Left-to-Right	RecordLocks:	No Locks
RecordsAffected:	0	RecordsetType:	Dynaset
ReturnsRecords:	True	Type:	0
Updatable:	True		

**SQL**

```
SELECT QLBCSAllCodesOwnership.OwnershipCodeLevel1, QLBCSAllCodesOwnership_1.OwnershipDescription, Sum(TParcels.ParcelAssdArea) AS TotalAcreage, Sum(TParcels.ParcelAssdSQFT) AS TotalSQFT FROM TParcels INNER JOIN ((TLandUseOwnership INNER JOIN QLBCSAllCodesOwnership ON TLandUseOwnership.LBCSID=QLBCSAllCodesOwnership.LBCSID) INNER JOIN QLBCSAllCodesOwnership AS QLBCSAllCodesOwnership_1 ON QLBCSAllCodesOwnership.OwnershipCodeLevel1=QLBCSAllCodesOwnership_1.OwnershipCode) ON TParcels.ParcelID=TLandUseOwnership.ParcelID GROUP BY QLBCSAllCodesOwnership.OwnershipCodeLevel1, QLBCSAllCodesOwnership_1.OwnershipDescription;
```

**Columns**

Name	Type	Size
OwnershipCodeLevel1	Double	8
OwnershipDescription	Text	255
TotalAcreage	Double	8
TotalSQFT	Double	8

**Properties**

DateCreated:	9/12/2002 1:23:15 PM	DefaultView:	Datasheet
DOL:	Long binary data	GUID:	{guid {AD7292FB-AA5D-4DC4-A294-B8720FD15770}}
LastUpdated:	9/12/2002 1:28:15 PM	MaxRecords:	0
ODBCTimeout:	60	OrderByOn:	False
Orientation:	Left-to-Right	RecordLocks:	No Locks
RecordsAffected:	0	RecordsetType:	Dynaset
ReturnsRecords:	True	Type:	0
Updatable:	True		

**SQL**

```
SELECT TParcels.ParcelID, TParcels.ParcelAssdArea, TParcels.ParcelAssdSQFT, QLBCSAllCodes.LBCSLevel1 AS Activity, QLBCSAllCodes.LBCSDescription AS ActivityDescription, QLBCSAllCodes_1.LBCSLevel1 AS Structure, QLBCSAllCodes_1.LBCSDescription AS StructureDescription  
FROM (TParcels INNER JOIN (TLandUseActivity INNER JOIN QLBCSAllCodes ON TLandUseActivity.LBCSID=QLBCSAllCodes.LBCSID) ON TParcels.ParcelID=TLandUseActivity.ParcelID) INNER JOIN (TLandUseStructure INNER JOIN QLBCSAllCodes AS QLBCSAllCodes_1 ON TLandUseStructure.LBCSID=QLBCSAllCodes_1.LBCSID) ON TParcels.ParcelID=TLandUseStructure.ParcelID;
```

**Columns**

Name	Type	Size
ParcelID	Long Integer	4
ParcelAssdArea	Double	8
ParcelAssdSQFT	Double	8
Activity	Double	8
ActivityDescription	Text	255
Structure	Double	8
StructureDescription	Text	255

**Properties**

DateCreated:	9/12/2002 1:24:23 PM	DefaultView:	Datasheet
DOL:	Long binary data	GUID:	{guid {FBAD9CF4-12AD-40B6-B289-DFE088FEE2BB}}
LastUpdated:	9/12/2002 1:38:00 PM	MaxRecords:	0
ODBCTimeout:	60	Orientation:	Left-to-Right
RecordLocks:	No Locks	RecordsAffected:	0
RecordsetType:	Dynaset	ReturnsRecords:	True
Type:	16	Updatable:	True

**SQL**

```

TRANSFORM Sum(QxActivityByStructure.ParcelAssdArea) AS SumOfParcelAssdArea
SELECT QLBCSAllCodesStructure.StructureDescription, Sum(QxActivityByStructure.ParcelAssdArea) AS [Total
Of ParcelAssdArea]
FROM (QxActivityByStructure INNER JOIN QLBCSAllCodesActivity ON QxActivityByStructure.Activity =
QLBCSAllCodesActivity.ActivityCode) INNER JOIN QLBCSAllCodesStructure ON QxActivityByStructure.Structure
= QLBCSAllCodesStructure.StructureCode
GROUP BY QLBCSAllCodesStructure.StructureDescription
ORDER BY QLBCSAllCodesStructure.StructureDescription, QLBCSAllCodesActivity.ActivityDescription
PIVOT QLBCSAllCodesActivity.ActivityDescription;
  
```

**Columns**

Name	Type	Size
StructureDescription	Text	255
Total Of ParcelAssdArea	Double	8
Industrial, manufacturing, and waste-related activities	Double	8
Leisure activities	Double	8
Mass assembly of people	Double	8
Natural resources-related activities	Double	8
No human activity or unclassifiable activity	Double	8
Residential activities	Double	8
Shopping, business, or trade activities	Double	8
Social, institutional, or infrastructure-related activities	Double	8
Travel or movement activities	Double	8

**Properties**

AccessVersion:	08.50	ANSI Query Mode:	0
Auto Compact:	0	Build:	702
CollatingOrder:	General	HasCustomGroups:	True
ProjVer:	24	QueryTimeout:	60
RecordsAffected:	0	Remove Personal Informatio	1
Row Limit:	10000	Show Values in Indexed:	1
Show Values in Non-Indexed	1	Show Values in Remote:	0
Show Values in Server:	0	Show Values in Snapshot:	1
Show Values Limit:	1000	Transactions:	True
Updatable:	True	Use Default Connection File:	0
Use Default Page Folder:	0	Version:	4.0

**User Permissions**

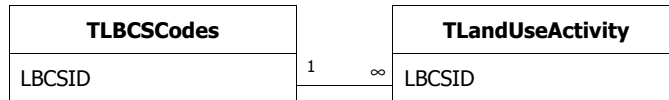
admin

**Group Permissions**

Admins  
Users

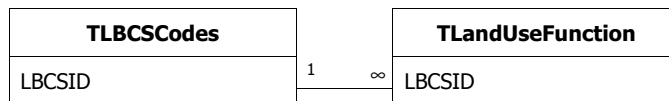
**Relationships**

**TLBCSCodesTLandUseActivity**



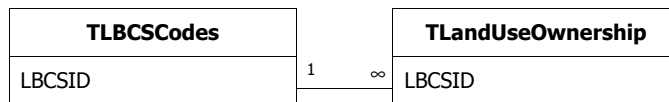
Attributes: Enforced, Cascade Updates, Cascade Deletes  
RelationshipType: One-To-Many

**TLBCSCodesTLandUseFunction**



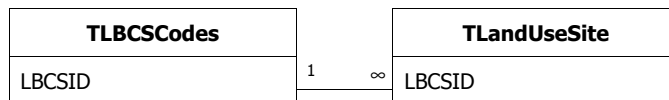
Attributes: Enforced, Cascade Updates, Cascade Deletes  
RelationshipType: One-To-Many

**TLBCSCodesTLandUseOwnership**



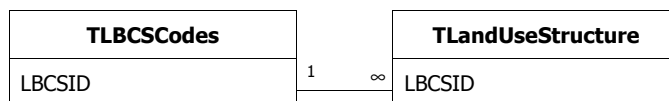
Attributes: Enforced, Cascade Updates, Cascade Deletes  
RelationshipType: One-To-Many

**TLBCSCodesTLandUseSite**



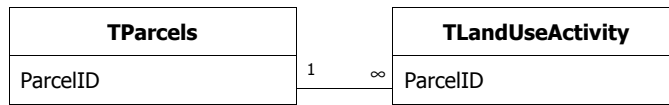
Attributes: Enforced, Cascade Updates, Cascade Deletes  
RelationshipType: One-To-Many

**TLBCSCodesTLandUseStructure**



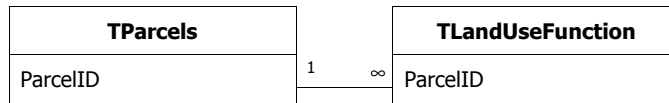
Attributes: Enforced, Cascade Updates, Cascade Deletes  
RelationshipType: One-To-Many

**TParcelsTLandUseActivity**



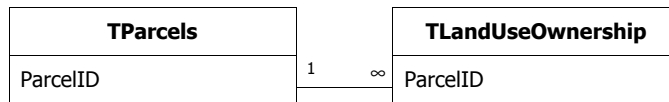
Attributes: Enforced, Cascade Updates, Cascade Deletes  
RelationshipType: One-To-Many

**TParcelsTLandUseFunction**



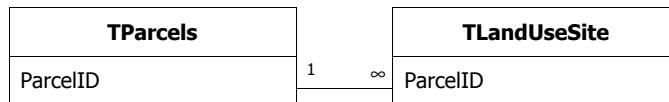
Attributes: Enforced, Cascade Updates, Cascade Deletes  
RelationshipType: One-To-Many

**TParcelsTLandUseOwnership**



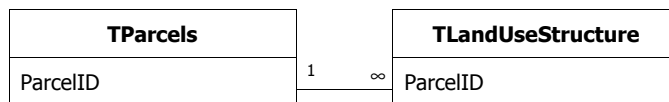
Attributes: Enforced, Cascade Updates, Cascade Deletes  
RelationshipType: One-To-Many

**TParcelsTLandUseSite**



Attributes: Enforced, Cascade Updates, Cascade Deletes  
RelationshipType: One-To-Many

**TParcelsTLandUseStructure**



Attributes: Enforced, Cascade Updates, Cascade Deletes  
RelationshipType: One-To-Many